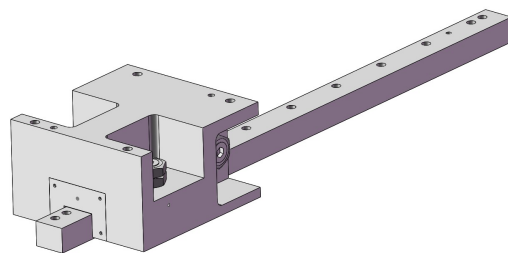
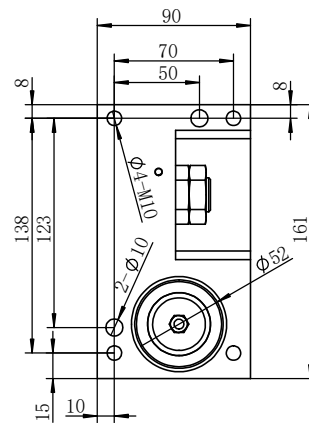
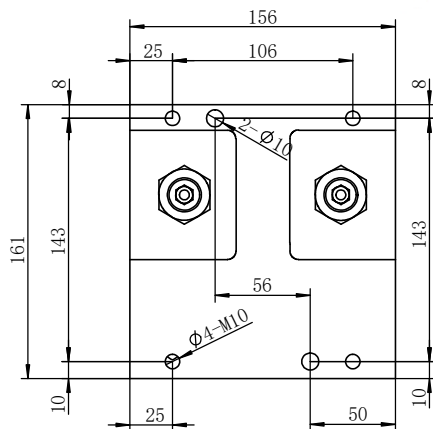
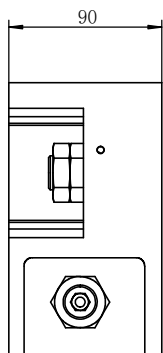
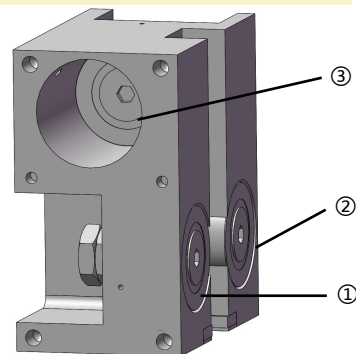
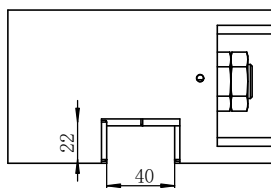


F52 型滾輪支座 (左側支座)



Roller support (left hand version)

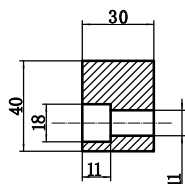
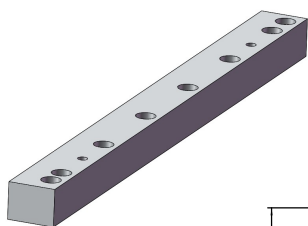


型號 Code	①	②	③	重量 M (kg)	C_{0W} (N)	$C_W^{①}$ (N)	$C_W^{②}$ (N)	N_{max} (min ⁻¹)
KGA52.1L	GBR	GER	GER	4	28000	14000	3500	3800
KGA52.2L	GBR	GER	GBR	4	28000	14000	3500	3800
KGA52.3L	GER	GBR	GER	4	28000	14000	3500	3800

$CW^{①}$: Normal service life 10^6m $CW^{②}$: Normal service life 10^8m

矩形導軌

Guideway fat rail



型號 Code	L	L1	材料 Material	螺栓型號 Bolt size
KGF304010	1000	900	42CrMo	M10×40 8.8 級

