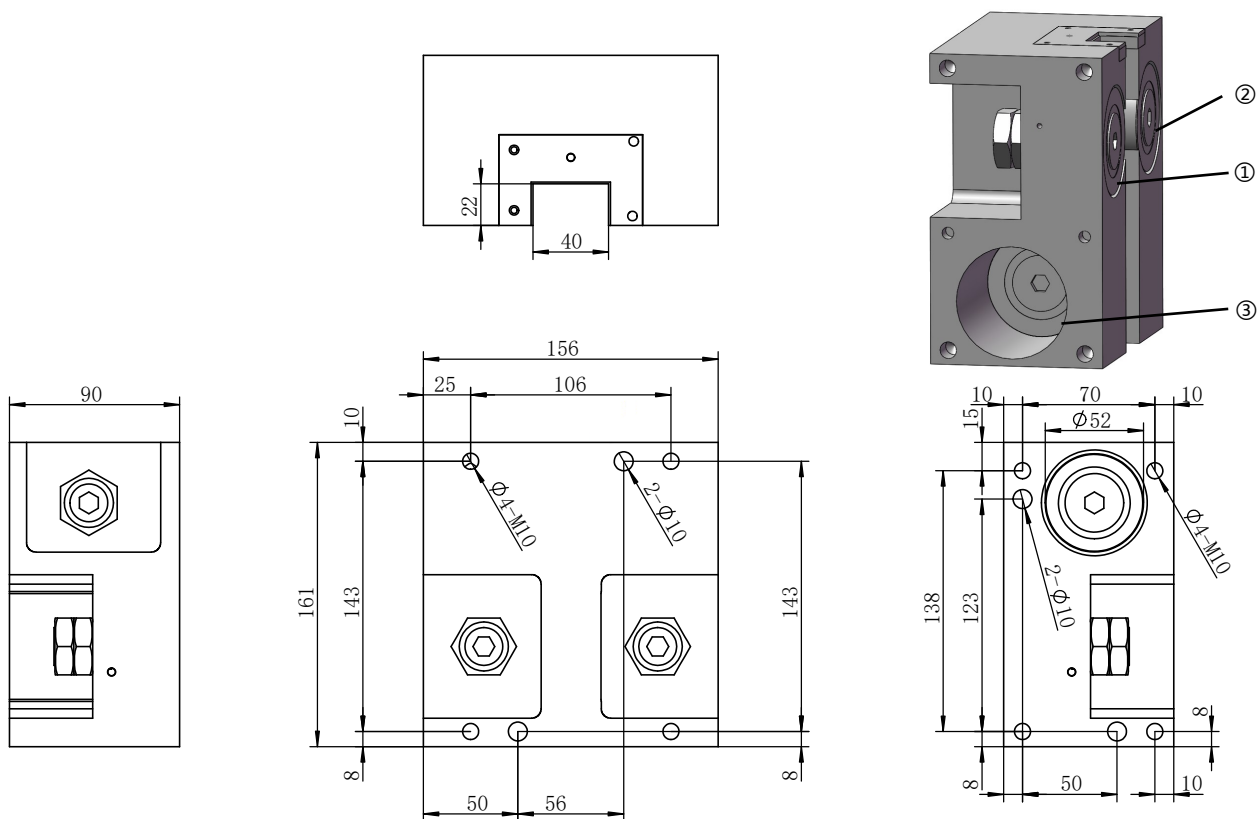


F52 型滾輪組

F52 型滾輪支座 (右側支座)

Roller support (right hand version)

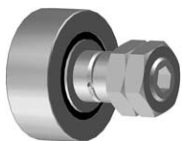


型號 Code	①	②	③	重量 M (kg)	C _{0W} (N)	C _W ^① (N)	C _W ^② (N)	Nmax (min ⁻¹)
KGA52.1R	GBR	GER	GER	4	28000	14000	3500	3800
KGA52.2R	GBR	GER	GBR	4	28000	14000	3500	3800
KGA52.3R	GER	GBR	GER	4	28000	14000	3500	3800

CW^① : Normal service life 10⁶m CW^② : Normal service life 10⁸m

螺栓型滾輪

Stud roller



型號 Code	圖 Fig.	偏心量 Excenter (mm)	重量 Weight (kg)	螺母擰緊力矩 MA (Nm)
GBR52	1	-	0.47	120
GER52	2	1	0.47	120

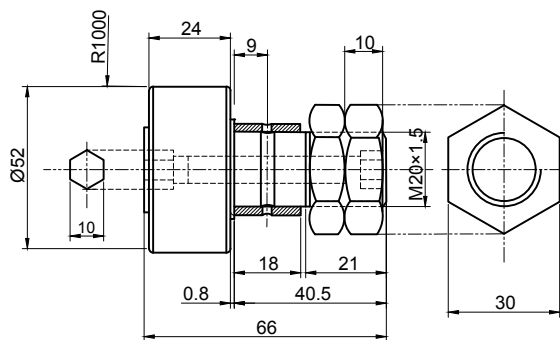


图1 Fig.1

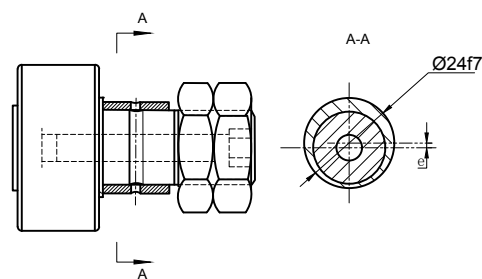


图2 Fig.2